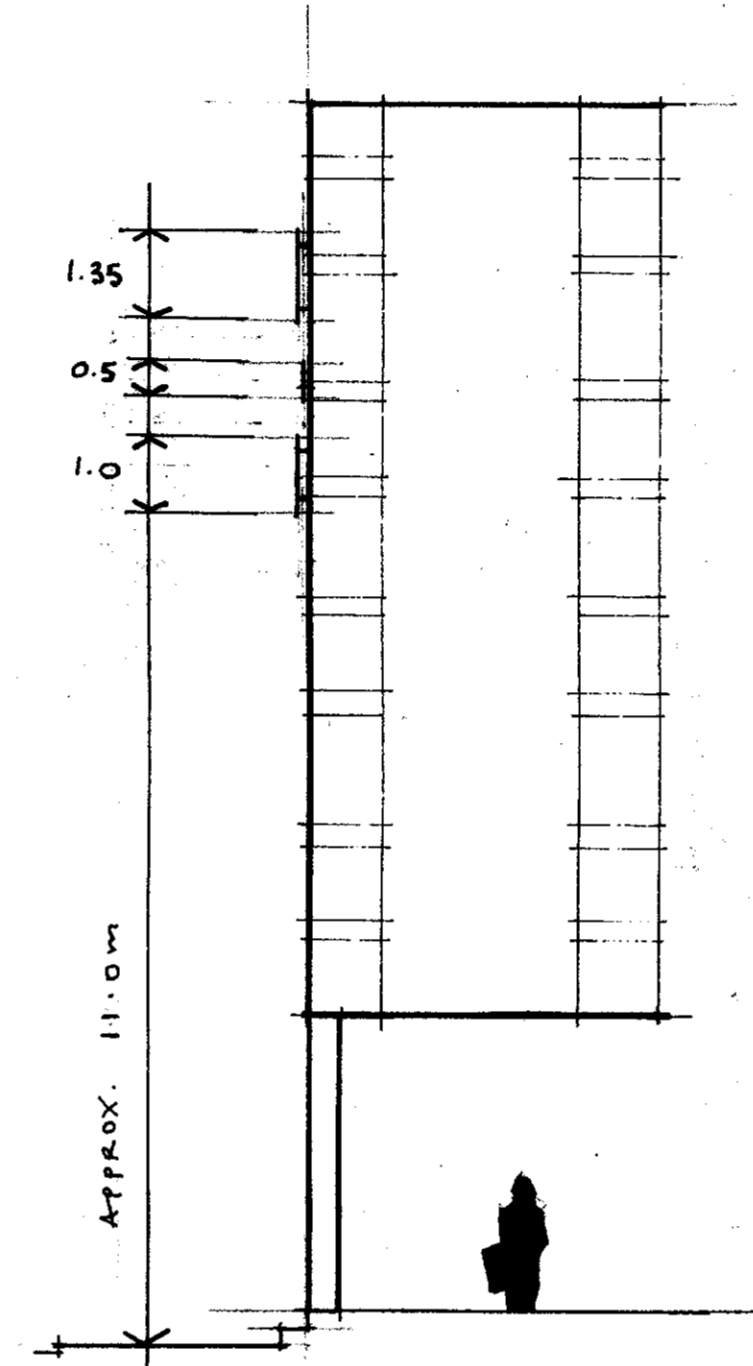
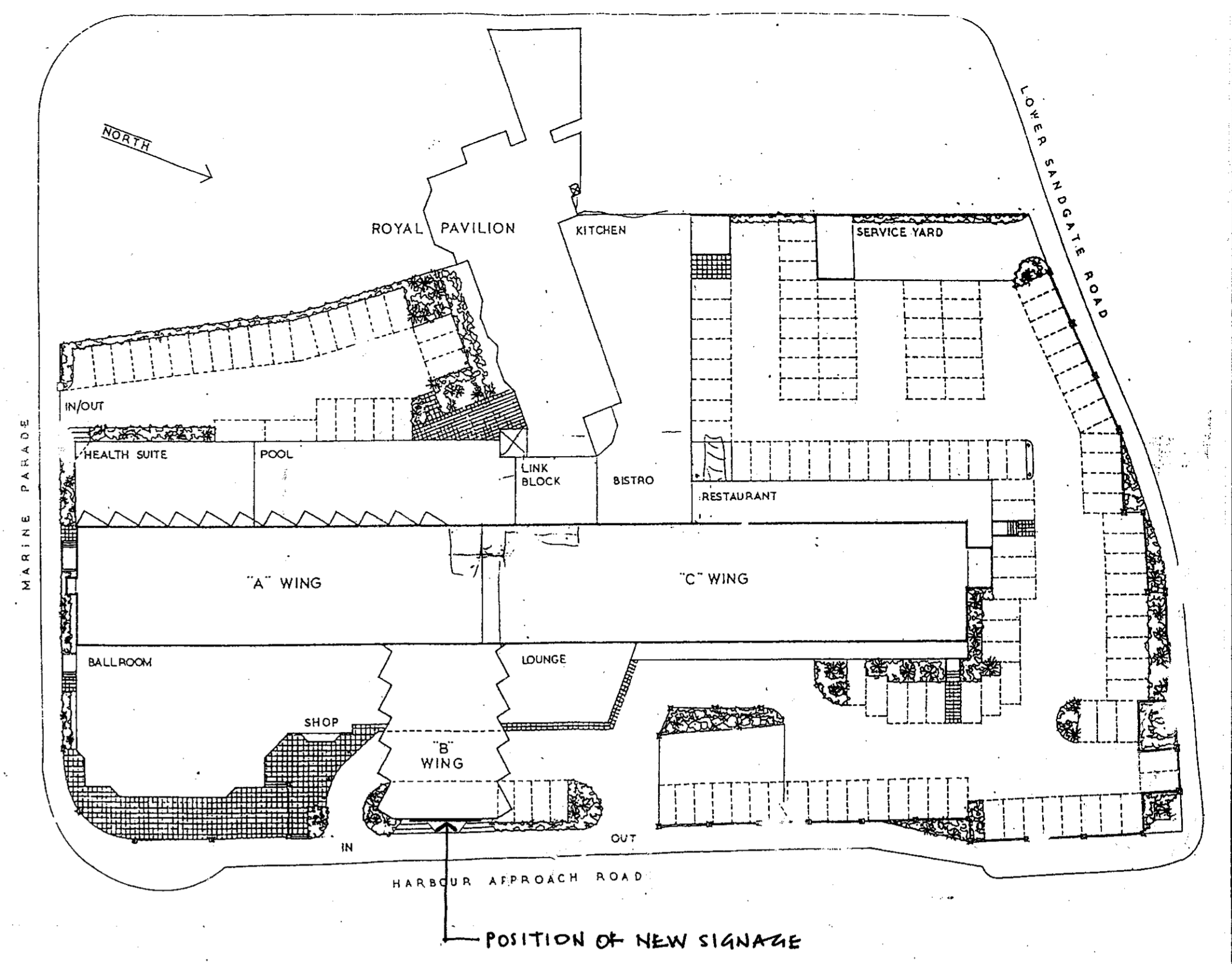


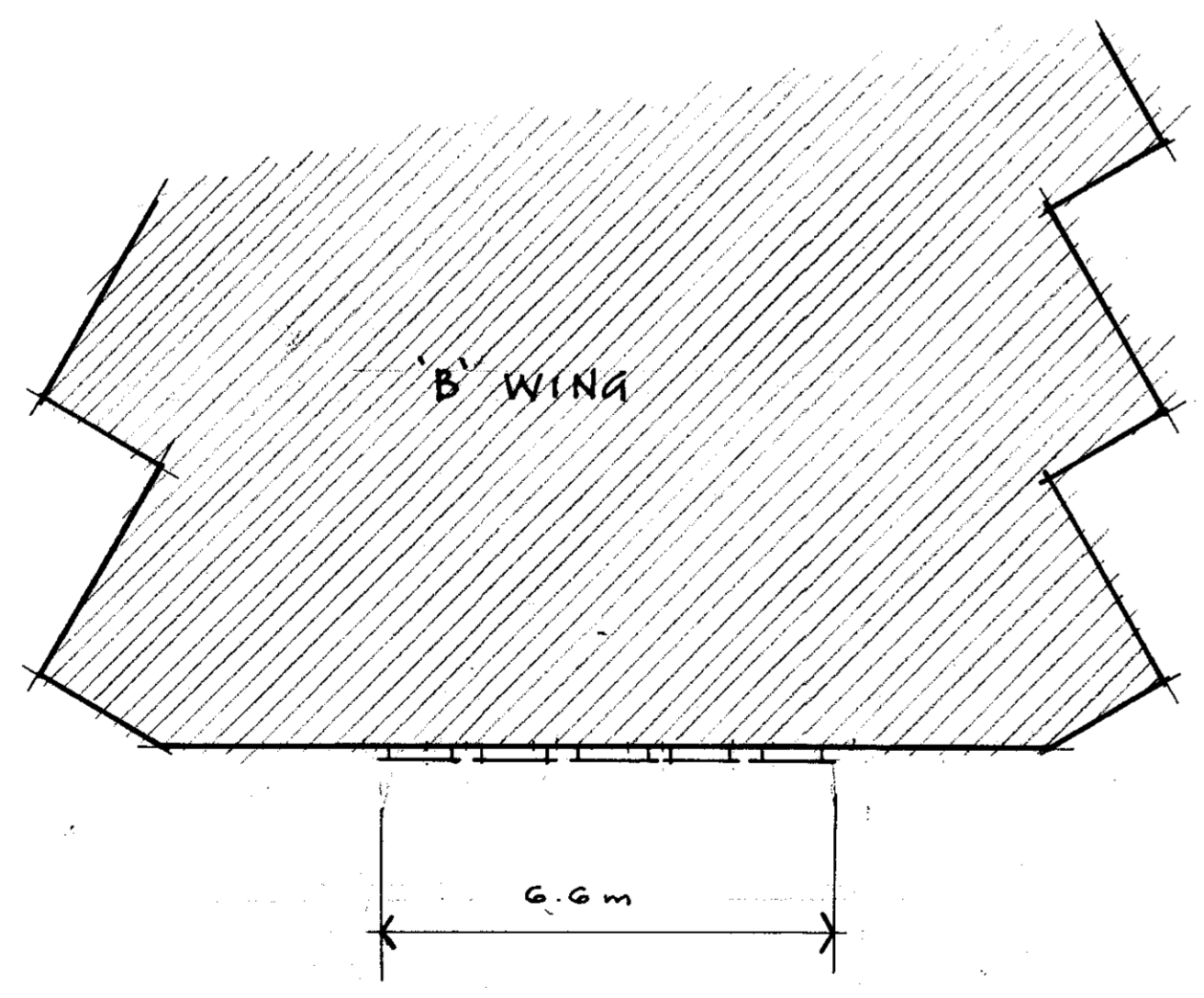
FRONT ELEVATION 1:100



SIDE ELEVATION 1:100



SITE PLAN 1:500



PLAN 1:100

SIGNAGE:
LETTERING: -
 POWDER COATED (REFLEX BLUE)
 5mm THICK ALUMINIUM LETTERS
 (SEE DRAWINGS FOR SIZES)
 INDIVIDUALLY FIXED TO GABLE:
 VIA 150mm LONG SPEERS
 (WHERE ILLUMINATED)
 VIA 25mm SPACERS (WHERE
 NON-ILLUMIN.)
ILLUMINATION: -
 "GRAND" & "HOTEL" TO BE
 ILLUMINATED
 "BURSTIN" TO BE NON-ILLUMINATED.
 EACH LETTER OF ILLUMINATED
 PARTS OF SIGN TO HAVE LED
 LIGHTS FITTED TO REAR TO GIVE
 HALO EFFECT BY REFLECTING
 LIGHT OFF THE GABLE.

RECEIVED
 - 8 FEB 2003

Rev.	Date	Details
A	8 FEB 03	Signage size reduced per discussions with Planner
AMENDMENTS		APPLICATION

Y06/0182/SH - 8 FEB 2003
 VALID

THE GRAND BURSTIN
 HOTEL
 FOLKESTONE

PROPOSED SIGNAGE

**PRESTWICH
 DESIGN
 GROUP**
 PRESTWICH DESIGN GROUP

253 HALE ROAD, HALE
 CHESHIRE, WA15 8RE
 Tel: 0161 904 8686 - Fax: 0161 904 5348

Scale 1:1000 PO12-01A