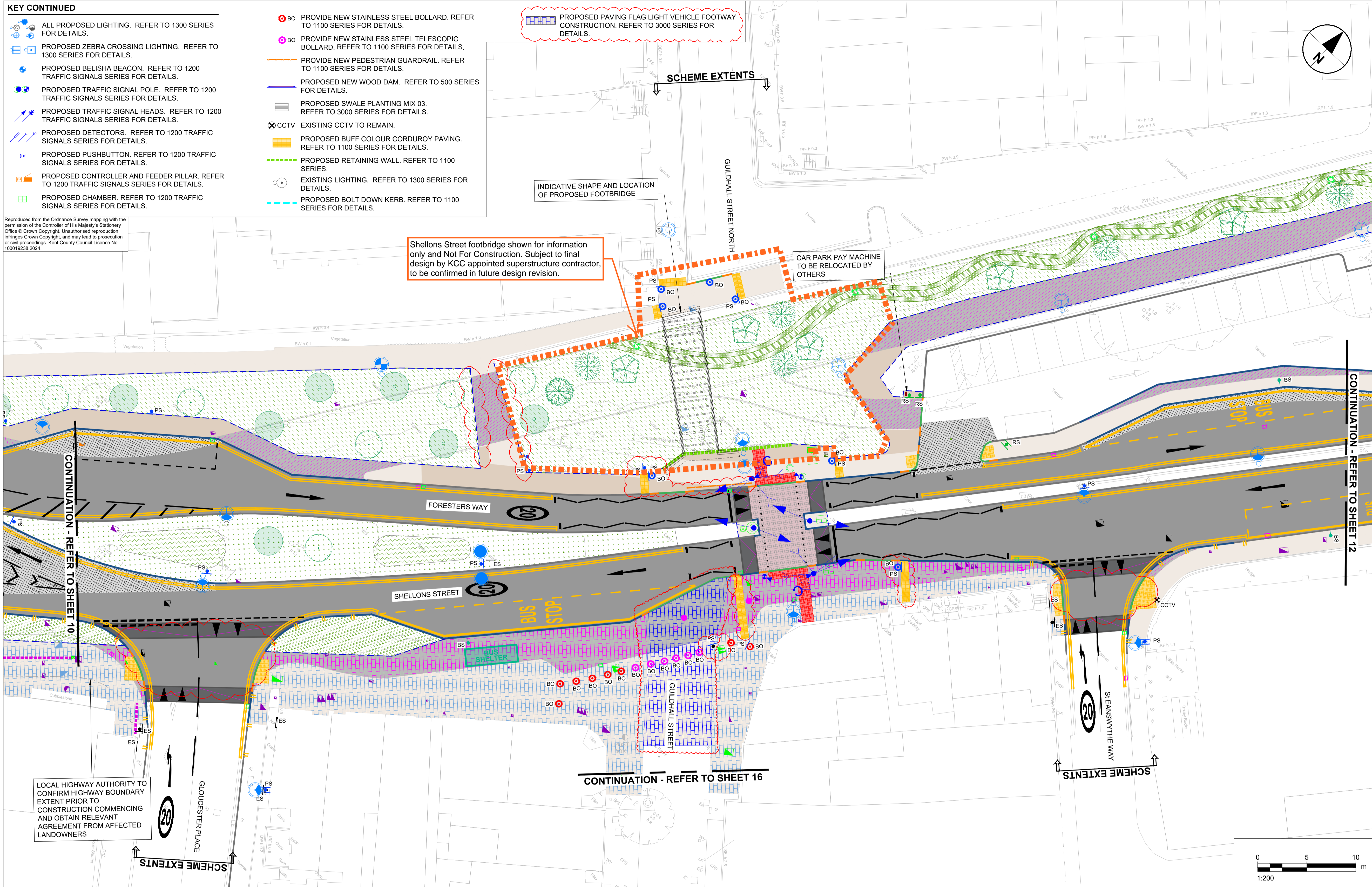


- KEY CONTINUED**
- ALL PROPOSED LIGHTING. REFER TO 1300 SERIES FOR DETAILS.
 - PROPOSED ZEBRA CROSSING LIGHTING. REFER TO 1300 SERIES FOR DETAILS.
 - PROPOSED BELISHA BEACON. REFER TO 1200 TRAFFIC SIGNALS SERIES FOR DETAILS.
 - PROPOSED TRAFFIC SIGNAL POLE. REFER TO 1200 TRAFFIC SIGNALS SERIES FOR DETAILS.
 - PROPOSED TRAFFIC SIGNAL HEADS. REFER TO 1200 TRAFFIC SIGNALS SERIES FOR DETAILS.
 - PROPOSED DETECTORS. REFER TO 1200 TRAFFIC SIGNALS SERIES FOR DETAILS.
 - PROPOSED PUSHBUTTON. REFER TO 1200 TRAFFIC SIGNALS SERIES FOR DETAILS.
 - PROPOSED CONTROLLER AND FEEDER PILLAR. REFER TO 1200 TRAFFIC SIGNALS SERIES FOR DETAILS.
 - PROPOSED CHAMBER. REFER TO 1200 TRAFFIC SIGNALS SERIES FOR DETAILS.
 - PROVIDE NEW STAINLESS STEEL BOLLARD. REFER TO 1100 SERIES FOR DETAILS.
 - PROVIDE NEW STAINLESS STEEL TELESCOPIC BOLLARD. REFER TO 1100 SERIES FOR DETAILS.
 - PROVIDE NEW PEDESTRIAN GUARDRAIL. REFER TO 1100 SERIES FOR DETAILS.
 - PROPOSED NEW WOOD DAM. REFER TO 500 SERIES FOR DETAILS.
 - PROPOSED SWALE PLANTING MIX 03. REFER TO 3000 SERIES FOR DETAILS.
 - EXISTING CCTV TO REMAIN.
 - PROPOSED BUFF COLOUR CORDUROY PAVING. REFER TO 1100 SERIES FOR DETAILS.
 - PROPOSED RETAINING WALL. REFER TO 1100 SERIES.
 - EXISTING LIGHTING. REFER TO 1300 SERIES FOR DETAILS.
 - PROPOSED BOLT DOWN KERB. REFER TO 1100 SERIES FOR DETAILS.

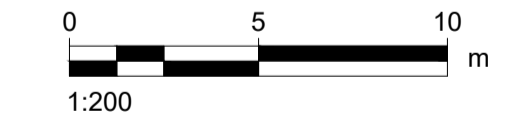
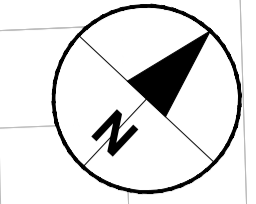
Reproduced from the Ordnance Survey mapping with the permission of the Controller of His Majesty's Stationery Office © Crown Copyright. Unauthorised reproduction infringes Crown Copyright, and may lead to prosecution or civil proceedings. Kent County Council Licence No 100019238.2024.



Shellons Street footbridge shown for information only and Not For Construction. Subject to final design by KCC appointed superstructure contractor, to be confirmed in future design revision.

CAR PARK PAY MACHINE TO BE RELOCATED BY OTHERS

INDICATIVE SHAPE AND LOCATION OF PROPOSED FOOTBRIDGE



- KEY**
- EXISTING KERB WITH VARIABLE UPSTAND.
 - PROPOSED FULL HEIGHT KERB WITH VARIABLE UPSTAND. REFER TO 1100 SERIES FOR DETAILS.
 - PROPOSED DROPPED KERB. REFER TO 1100 SERIES FOR DETAILS.
 - PROPOSED TRANSITION KERB. REFER TO 1100 SERIES FOR DETAILS.
 - PROPOSED 45° SPLAYED KERB. REFER TO 1100 SERIES FOR DETAILS.
 - PROPOSED BLOCK CYCLEWAY DEMARCATION PAVING. REFER TO 1100 SERIES FOR DETAILS.
 - PROPOSED QUADRANT KERBS. REFER TO 1100 SERIES FOR DETAILS.
 - PROPOSED FLAT TOP CONCRETE EDGING. REFER TO 1100 SERIES FOR DETAILS.
 - PROPOSED DRAINAGE CHANNEL. REFER TO 500 SERIES FOR DETAILS.
 - PROPOSED PARTIAL ASPHALT FOOTWAY CONSTRUCTION. REFER TO 1100 SERIES FOR DETAILS.
 - PROPOSED FULL ASPHALT FOOTWAY CONSTRUCTION. REFER TO 1100 SERIES FOR DETAILS.
 - PROPOSED ASPHALT TRAFFIC ISLAND. REFER TO 1100 SERIES FOR DETAILS.
 - PROPOSED FOOTWAY BUILDOUT. REFER TO 1100 SERIES FOR DETAILS.
 - PROPOSED CYCLE LANE CONSTRUCTION. REFER TO 1100 SERIES FOR DETAILS.
 - PROPOSED RAMP LOCATION. REFER TO 700 SERIES FOR RAMP / VIRTUAL RAMP DETAILS.
 - PROPOSED BUFF COLOUR BLISTER PAVING. REFER TO 1100 SERIES FOR DETAILS.
 - PROPOSED RED COLOUR BLISTER PAVING. REFER TO 1100 SERIES FOR DETAILS.
 - PROPOSED BUFF COLOUR LADDER AND TRAMLINE PAVING. REFER TO 1100 SERIES FOR DETAILS.
 - PROPOSED NEW TIMBER BOLLARD. REFER TO 1100 SERIES FOR DETAILS.
 - PROPOSED NEW MANCHESTER STYLE BOLLARD. REFER TO 1100 SERIES FOR DETAILS.
 - EXISTING COVER AND FRAME. REFER TO 1100 SERIES FOR DETAILS.
 - PROPOSED RECESS INSET COVER. REFER TO 1100 SERIES FOR DETAILS.
 - EXISTING UTILITY CABINET TO REMAIN.
 - RETENTION AND RELOCATION OF EXISTING BUS SHELTER
 - NEW CLEAR CHANNEL BUS SHELTER TO BE INSTALLED BY CLIENT APPOINTED CONTRACTOR.
 - PROPOSED PAVING FOOTWAY BUILDOUT. REFER TO 1100 SERIES FOR DETAILS.
 - PROPOSED PAVING FOOTWAY CONSTRUCTION. REFER TO 1100 SERIES FOR DETAILS.
 - PROPOSED BRICK WALL. REFER TO 1100 SERIES FOR DETAILS.
 - PROPOSED CARRIAGEWAY RESURFACING MILL OUT. REFER TO 700 SERIES FOR DETAILS.
 - PROPOSED NEW FULL PAVEMENT CONSTRUCTION. REFER TO 700 SERIES FOR DETAILS.
 - PROPOSED NEW HERRINGBONE CONCRETE BLOCKS. REFER TO 700 SERIES FOR DETAILS.
 - PROPOSED ASPHALT RAISED TABLE SURFACING. REFER TO 700 SERIES FOR DETAILS.
 - PROPOSED RED COLOURED RESIN BASED HIGH FRICTION SURFACE TREATMENT. REFER TO 700 SERIES FOR DETAILS.
 - EXISTING MANHOLE / INSPECTION COVER AND FRAME TO BE REPLACED. REFER TO 700 SERIES FOR DETAILS.
 - EXISTING MANHOLE / INSPECTION COVER AND FRAME. REFER TO 700 SERIES FOR DETAILS.
 - PROPOSED MINI FEEDER PILLAR. REFER TO 1300 SERIES FOR DETAILS.
 - EXISTING COVER AND FRAME REFER TO 700 SERIES FOR DETAILS.
 - PROPOSED ROAD MARKINGS. REFER TO 1200 SERIES FOR DETAILS.
 - PROPOSED SIGN AND POST TO BE INSTALLED. REFER TO 1200 SERIES FOR DETAILS.
 - PROPOSED SIGN AND ILLUMINATED POST TO BE INSTALLED. REFER TO 1200 SERIES FOR DETAILS.
 - EXISTING SIGN AND POST TO REMAIN.
 - TAKE UP FROM SITE AND REINSTALL EXISTING SIGN AND POST. REFER TO 1200 SERIES FOR DETAILS.
 - NEW BUS STOP FLAG TO BE INSTALLED BY CLIENT APPOINTED CONTRACTOR.
 - PROPOSED NEW SELF-RIGHTING BOLLARD. REFER TO 1200 SERIES FOR DETAILS.
 - PROPOSED NEW SELF-RIGHTING KEEP LEFT/RIGHT BOLLARD. REFER TO 1200 SERIES FOR DETAILS.
 - PROPOSED NEW BELISHA BEACON. REFER TO 1200 SERIES FOR DETAILS.
 - EXISTING COVER AND FRAME TO BE RELOCATED BY OTHERS AND ADJUSTED TO SUITE NEW SURFACE LEVELS.
 - PROPOSED PLANTING MIX 01, MIX 02, MIX 03, MIX 04, MIX 05 & MIX 06. REFER TO 3000 SERIES FOR DETAILS.
 - PROPOSED AMENITY GRASS. REFER TO 3000 SERIES FOR DETAILS.
 - PROPOSED TREES. REFER TO 3000 SERIES FOR DETAILS.
 - PROPOSED GULLY. REFER TO 500 SERIES FOR DETAILS.
 - EXISTING GULLY. REFER TO 500 SERIES FOR DETAILS.
 - PROPOSED INSPECTION CHAMBER. REFER TO 500 SERIES FOR DETAILS.
 - EXISTING DRAINAGE CHAMBER. REFER TO 500 SERIES FOR DETAILS.
 - EXISTING LIGHTING COLUMN TO REMAIN

AECOM

PROJECT
Folkestone
 A BRIGHTER FUTURE

CLIENT
KENT COUNTY COUNCIL

CONSULTANT
 AECOM Limited
 Marlborough Court
 10 Bricket Road
 St Albans
 AL1 3JX
 United Kingdom

T: +44(0)1727 535000
www.aecom.com

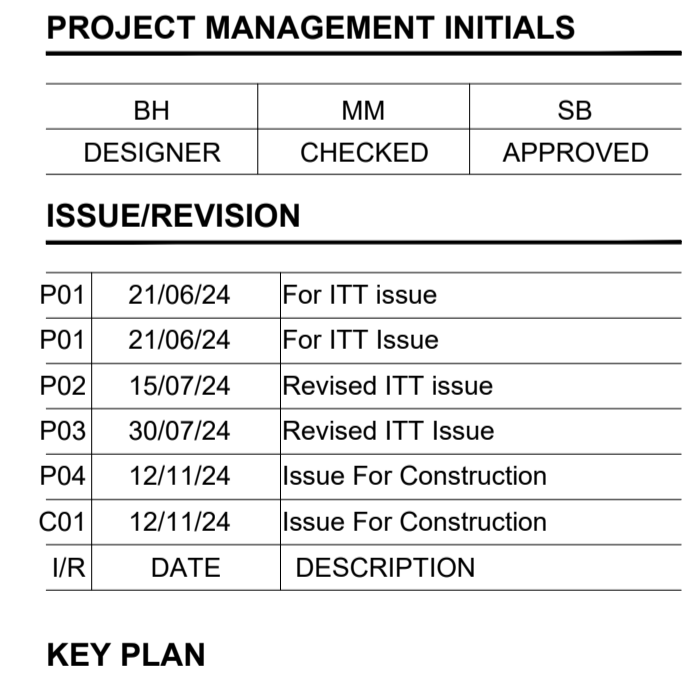
- NOTES**
- DO NOT SCALE FROM THIS DRAWING. USE FIGURED DIMENSIONS ONLY. ALL DIMENSIONS ARE IN METERS UNLESS OTHERWISE STATED.
 - THE CONTRACTOR SHALL COMPLY WITH THE MANUAL HANDLING OPERATIONS REGULATIONS 1992 AS AMENDED 2004.
 - DRAWING IS BASED ON TOPOGRAPHICAL SURVEY SUPPLIED BY 'WE MADE THAT' DATED 22/11/2022.
 - ALL SETTING OUT AND CONSTRUCTION DETAILS TO BE AGREED ON SITE WITH SUPERVISING ENGINEER PRIOR TO COMMENCEMENT.
 - THIS DRAWING IS TO BE READ IN CONJUNCTION WITH RELEVANT DETAILED DESIGN DRAWINGS AND SPECIFICATION.
 - ITEMS IN GREY REPRESENT THE EXISTING LAYOUT AND INFRASTRUCTURE UNLESS OTHERWISE INDICATED.
 - COLOURS SHOWN IN THESE DRAWINGS ARE INDICATIVE AND SHOULD NOT BE CONFUSED WITH THOSE OF FINISHED SURFACES.
 - EXCAVATIONS NEAR ANY SERVICES ARE TO BE HAND DUG.
 - THE CONTRACTOR SHALL BE RESPONSIBLE FOR ESTABLISHING THE POSITION AND STATUS OF ALL STATUTORY UTILITY APPARATUS PRIOR TO COMMENCING ANY WORKS.
 - ALL UTILITY COVERS TO BE LOWERED OR RAISED TO NEW FINISHED CARRIAGEWAY/FOOTWAY LEVELS. CONTRACTOR TO LAISE WITH RELEVANT UTILITIES COMPANIES.

PROJECT MANAGEMENT INITIALS

	BH	MM	SB
DESIGNER			
CHECKED			
APPROVED			

ISSUE/REVISION

I/R	DATE	DESCRIPTION
P01	21/06/24	For ITT Issue
P01	21/06/24	For ITT Issue
P02	15/07/24	Revised ITT Issue
P03	30/07/24	Revised ITT Issue
P04	12/11/24	Issue For Construction
C01	12/11/24	Issue For Construction
I/R	DATE	DESCRIPTION



PROJECT NUMBER
60702364

SHEET TITLE
 DETAILED DESIGN: HIGHWAYS
 GENERAL ARRANGEMENT
 SHEET 11

SHEET NUMBER
60702364-ACM-HGN-S2_ZZ_ZZ-DR-CH-0105

This drawing is confidential and shall only be used for the purpose of this project. The signing of this title block confirms the design and drafting of this project have been prepared and checked in accordance with the AECOM quality assurance system to ISO 9001:2000.